

**GENERAL NOTES:**

1. R.C.C. DETAIL AND CALCULATION TO BE SUBMITTED UNDER SEPARATE COVER.
2. W.C. & DRAINAGE PLANS TO BE SUBMITTED UNDER SEPARATE COVER.
3. ALL BRICK WORKS TO BE BUILT WITH CEMENT MORTAR 1:3 MIX.
4. MIN. HEIGHT OF BEAMS AND CEILING ABOVE FLOOR LINE TO BE 2.0m.
5. ALL DIMENSIONS TO BE INDICATED IN MILLIMETERS.
6. THE RUN IN/OUT TO BE CONSTRUCTED IN COMPLIANCE WITH HIGHWAY'S DEPARTMENT STANDARD DWGS. NOS: H5114, H5115 AND H5116.
7. THE PROPOSED TEMPORARY COLD STORE WILL NOT INVOLVE USE/STORAGE OF DANGEROUS GOODS.
8. ACCESS AND FACILITIES FOR PERSON WITH DISABILITY SHALL COMPLY WITH BUILDING (PLANNING) REGULATION 72 AND DESIGN MANUAL BARRIER FREE ACCESS 2008.
9. CODE OF PRACTICE FOR FIRE SAFETY IN BUILDINGS 2011 TO BE COMPLIED WITH.

**FIRE SERVICES NOTES:**

**1.0 SURFACE SPREAD OF FLAME**

- 1.1 ALL LININGS FOR ACOUSTIC AND THERMAL INSULATION PURPOSES IN DUCTINGS AND CONCEALED LOCATIONS SHALL BE OF CLASS 1 OR 2 RATE OF SURFACES SPREAD OF FLAMES AS PER BRITISH STANDARD 476:PART 7 OR ITS INTERNATIONAL EQUIVALENT, OR BE BROUGHT UP TO THAT STANDARD BY USE OF AN APPROVED FIRE RETARDANT PRODUCT.
- 1.2 ALL LININGS FOR ACOUSTIC AND THERMAL INSULATION AND DECORATIVE PURPOSES WITHIN PROTECTED MEANS OF ESCAPE SHALL BE OF CLASS 1 OR 2 RATE OF SURFACES SPREAD OF FLAMES AS PER BRITISH STANDARD 476:PART 7 OR ITS INTERNATIONAL EQUIVALENT, OR BE BROUGHT UP TO THAT STANDARD BY USE OF AN APPROVED FIRE RETARDANT PRODUCT.

**2.0 DANGEROUS GOOD**

- 2.1 ANY INTENDED STORAGE OR USE OF DANGEROUS GOODS AS DEFINED IN CHAPTER 295 OF THE LAWS OF HONG KONG SHOULD BE NOTIFIED TO DIRECTOR OF FIRE SERVICES.

**3.0 EMERGENCY GENERATOR**

- 3.1 EMERGENCY GENERATOR WILL BE PROVIDED FOR THE ENTIRE DEVELOPMENT TO PROVIDE ESSENTIAL POWER TO THE F.S. INSTALLATION. THE NEW FIRE ALARM CONTROL PANEL SHALL BE BACKED UP WITH BATTERIES.

**4.0 EMERGENCY LIGHTING**

- 4.1 THE SPECIFICATION OF EMERGENCY LIGHTING SHALL COMPLY WITH H.K.F.S.D. STANDARD REQUIREMENTS.
- 4.2 EMERGENCY LIGHTING SHALL BE PROVIDED TO ALL BUILDINGS WITHIN THE PREMISES AND IN ADDITION, SUCH LIGHTING SHALL ALSO BE PROVIDED TO ENSURE ADEQUATE ILLUMINATION TO PERMIT SAFE EVACUATION TO THE OUTSIDE OF THE BUILDING AND IN ACCORDANCE WITH BS 5266-1:2011 AND BS EN 1838:2013.

**5.0 DIRECTIONAL AND EXIT SIGNS**

- 5.1 SUFFICIENT DIRECTIONAL AND EXIT SIGNS TO BE PROVIDED AND ENSURE THAT ALL EXIT ROUTES FROM ANY FLOOR WITHIN THE BUILDING ARE CLEARLY INDICATED AS REQUIRED BY THE CONFIGURATION OF STAIRCASES SERVING THE BUILDING.
- 5.2 EXIT SIGNS AND DIRECTIONAL SIGNS SHALL BE PROVIDED IN ACCORDANCE WITH FSD CIRCULAR LETTER 5/2008.

**6.0 FIRE ALARM CONTROL PANEL**

- 6.1 A MAIN FIRE ALARM CONTROL PANEL SHALL BE PROVIDED FOR THE ENTIRE DEVELOPMENT AND LOCATED INSIDE THE F.S. CONTROL ROOM AT G/F AS INDICATED ON PLAN.

**7.0 FIRE DETECTION AND ALARM SYSTEM**

- 7.1 FIRE DETECTION SYSTEM (HEAT DETECTORS) TO BE PROVIDED TO E/M PLANT ROOMS (NOT COVERED BY AUTOMATIC FIXED INSTALLATIONS, EXCEPT WATER METER CABINETS) IN ACCORDANCE WITH CIRCULAR LETTER 1/2009 & 3/2010 AND BS 5839-1 : 2002 + A2 : 2008 TO PROTECT AREA NOT COVERED BY AUTOMATIC SPRINKLER SYSTEM.
- 7.2 MANUAL FIRE ALARM SYSTEM TO BE PROVIDED AND INCORPORATED IN THE HOSE REEL SYSTEM AND INSTALLED AS AN INTEGRAL PART OF THE FIRE DETECTION SYSTEM. A MAIN F.S. CONTROL WHICH PERCEIVES FIRE ALARM SIGNAL FROM SPRINKLER SYSTEM, MANUAL FIRE ALARM SYSTEM AND AUTOMATIC FIRE ALARM SYSTEM TO BE LOCATED AS INDICATED ON PLAN.
- 7.3 BREAK GLASS UNITS AND ALARM BELLS TO BE PROVIDED FOR ALL HOSE REEL POINTS. IN ADDITION, BREAK GLASS UNITS TO BE PUMPS AND INITIATE THE WARNING DEVICES.
- 7.4 ALL FIRE ALARM SIGNALS INCLUDING DETECTORS, FLOW SWITCHES, BREAKGLASS UNITS, ETC. TO BE LINKED TO THE F.S. COMMUNICATION CENTRE BY DIRECT TELEPHONE LINE.
- 7.5 VISUAL FIRE ALARM FLASHING LIGHTS WILL NOT BE PROVIDED, DUE TO UNDER PRIVATE WITH ACCESS CONTROL.

**8.0 AUTOMATIC SPRINKLER SYSTEM**

- 8.1 AUTOMATIC SPRINKLER SYSTEM TO BE PROVIDED IN ACCORDANCE WITH LPC RULES FOR AUTOMATIC SPRINKLER INSTALLATION INCORPORATING BS EN 12845 : 2003 AND LPC TECHNICAL BULLETINS AND CIRCULAR LETTER 3/06 AND 3/2012 TO PROTECT THE ENTIRE DEVELOPMENT.
- 8.2 THE CLASSIFICATION OF THE ENTIRE DEVELOPMENT TO BE ORDINARY HAZARD GROUP III (OH III).
- 8.3 ONE 107000 LITRES (107m<sup>3</sup>) SPRINKLER WATER TANK TO BE PROVIDED FOR THE ENTIRE DEVELOPMENT AS INDICATED ON PLAN.
- 8.4 ONE SET OF ELECTRICAL DRIVEN SPRINKLER PUMPS (DUTY / STANDBY) SHALL BE PROVIDED ADJACENT TO THE SPRINKLER WATER TANK TO MAINTAIN THE REQUIRED FLOW AND PRESSURE.
- 8.5 ALL SPRINKLER ALARM SIGNALS TO BE TRANSMITTED TO THE SPRINKLER ANNUNCIATION PANEL AS INDICATED ON PLAN. SPRINKLER ALARM SIGNALS TO BE LINKED TO THE F.S. COMMUNICATION CENTRE BY DIRECT TELEPHONE LINE.
- 8.6 SPRINKLER CONTROL VALVE SET AND SPRINKLER INLET TO BE PROVIDED AS INDICATED ON PLAN.
- 8.7 DRY SPRINKLER SYSTEM SHOULD BE PROVIDED FOR COLD STORAGE ROOM.

**9.0 HOSE REEL SYSTEM**

- 9.1 ONE 2,000 LITRES (2m<sup>3</sup>) HOSE REEL WATER TANK TO BE PROVIDED FOR THE ENTIRE DEVELOPMENT AS INDICATED ON PLAN.
- 9.2 ONE SET OF ELECTRICAL DRIVEN HOSE REEL WATER PUMPS (DUTY / STANDBY) SHALL BE PROVIDED ADJACENT TO THE HOSE REEL WATER TANK TO MAINTAIN THE REQUIRED FLOW AND PRESSURE.

**10.0 VENTILATION/ AIR CONDITIONING CONTROL SYSTEM**

- 10.1 NO VENTILATION/AIR CONDITIONING CONTROL SYSTEM TO BE PROVIDED TO STOP MECHANICALLY INDUCED AIR MOVEMENT WITHIN A DESIGNATED FIRE COMPARTMENT.

**11.0 PORTABLE APPLIANCES**

- 11.1 4.5kg CO<sub>2</sub> FIRE EXTINGUISHER SHALL BE PROVIDED FOR ALL PLANT ROOMS.

**12.0 STREET FIRE HYDRANT SYSTEM**

- 12.1 STREET FIRE HYDRANT SYSTEM WILL NOT BE PROVIDED.

**13.0 OTHERS**

- 13.1 STATIC AND DYNAMIC SMOKE EXTRACTION SYSTEM IS NOT REQUIRED AS THE AGGREGATE AREA OF OPENABLE WINDOWS OF THE COMPARTMENT EXCEED 6.25% OF THE FLOOR AREA OF THAT COMPARTMENT.

**COLOUR INDICATION:**

- R.C. WORKS
- BRICK WORKS
- SOLID CONC. BLOCK
- EXTERNAL PLASTER
- CERAMIC TILES
- GLASS WORKS
- METAL WORKS
- WOOD WORKS
- SANITARY FITMENTS
- HARDCORE

- A.L. ALUMINIUM LOUVRE
- F.G.L. FIXED GLASS LOUVRE
- S.S. STAINLESS STEEL
- ⊕ PROPOSED STRUCTURAL LEVEL (M.P.D.)
- ⊖ FINISHED LEVEL

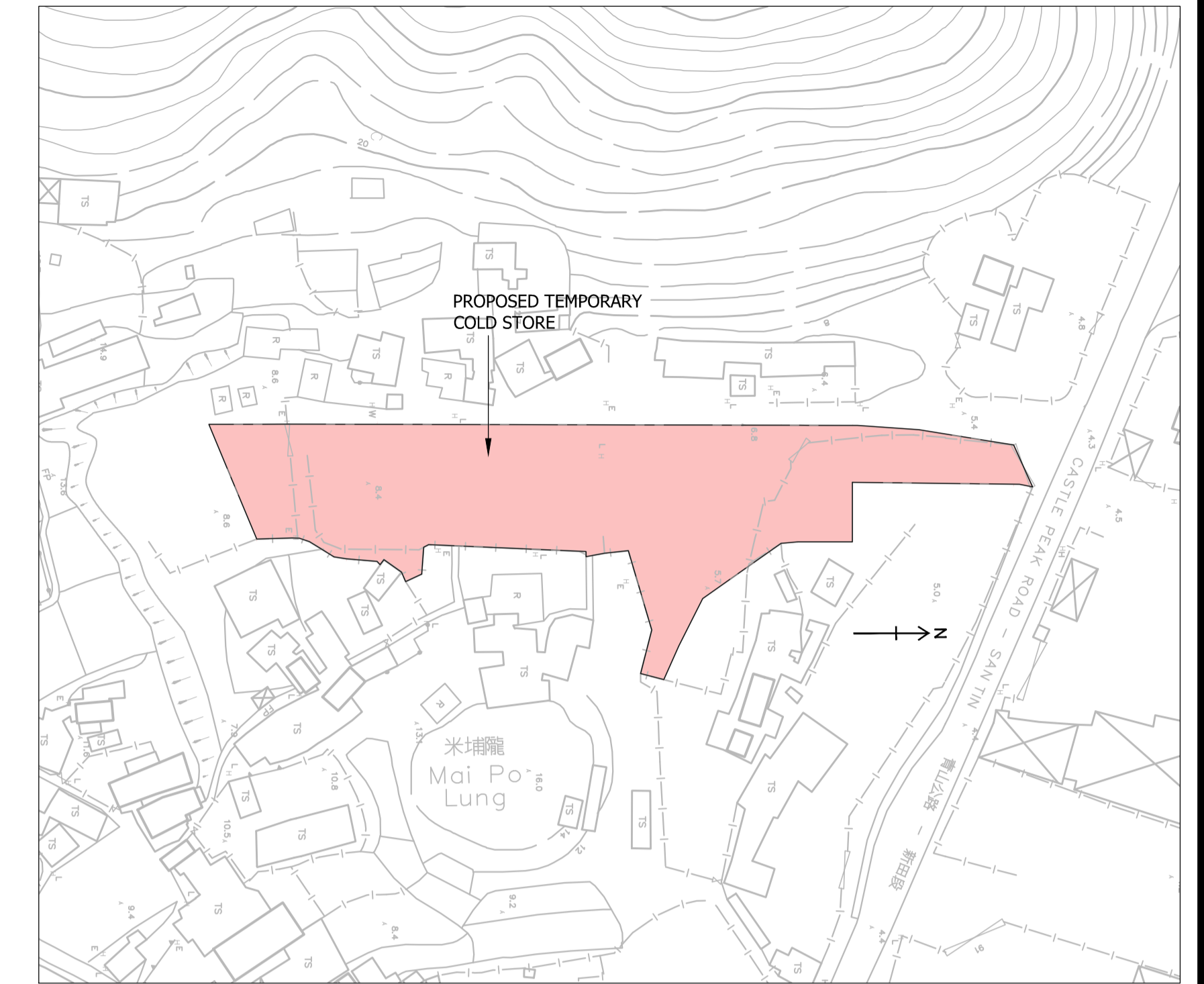
**ABBREVIATION**

**LEGEND FOR FIRE SERVICE EQUIPMENT:**

- ⊗ /H.R. HOSE REEL
- EXIT EXIT SIGN

**Site Boundary Information  
PRELIMINARY SITE BOUNDARY**

Pt.	Distance	N	E
A	2.641	839614.579	825005.297
B	32.902	839581.680	825004.896
C	11.721	839581.680	825016.617
D	10.757	839570.923	825016.617
E	3.343	839567.595	825016.926
F	18.872	839552.167	825027.796
G	10.463	839547.458	825037.140
H	7.259	839544.493	825043.765
J	4.727	839539.914	825042.590
K	8.900	839542.126	825033.970
L	16.290	839537.497	825018.351
M	4.700	839532.826	825018.873
N	3.716	839529.174	825019.557
P	1.002	839529.160	825018.556
Q	31.030	839498.160	825017.196
R	1.108	839497.173	825017.701
S	5.310	839496.782	825022.996
T	3.487	839493.613	825024.450
U	2.037	839492.795	825022.585
V	4.224	839489.359	825020.129
W	1.278	839488.578	825021.140
X	0.883	839488.002	825020.471
Y	6.059	839481.961	825019.998
Z	2.480	839479.513	825019.598
AA	4.417	839475.768	825017.256
AB	1.316	839474.635	825016.586
AC	2.086	839472.660	825015.915
AD	1.448	839471.212	825015.893
AE	6.940	839464.274	825016.078
AF	24.473	839454.823	824993.503
AG	15.451	839470.273	824993.444
AH	112.372	839582.645	824993.696
AJ	12.154	839594.768	824994.562
AK	18.906	839613.435	824997.559
AL	9.041	839617.174	825005.791



**BLOCK PLAN SCALE 1:1000**

REV.	DATE	DESCRIPTION
C	11/20	WITHDRAW RESUBMISSION
B	09/20	NOTES REVISED
A	02/19	GENERAL REVISION

PROJECT  
APPLICATION FOR A TEMPORARY COLD STORE FOR A PERIOD OF THREE YEARS IN "RESIDENTIAL (GROUP D)" ZONE AT VARIOUS LOTS IN D.D. 105 & ADJOINING GOVERNMENT LAND, SOUTH OF CASTLE PEAK ROAD-SAN TIN, MA PO LUNG, SAN TIN, YUEN LONG, N.T.

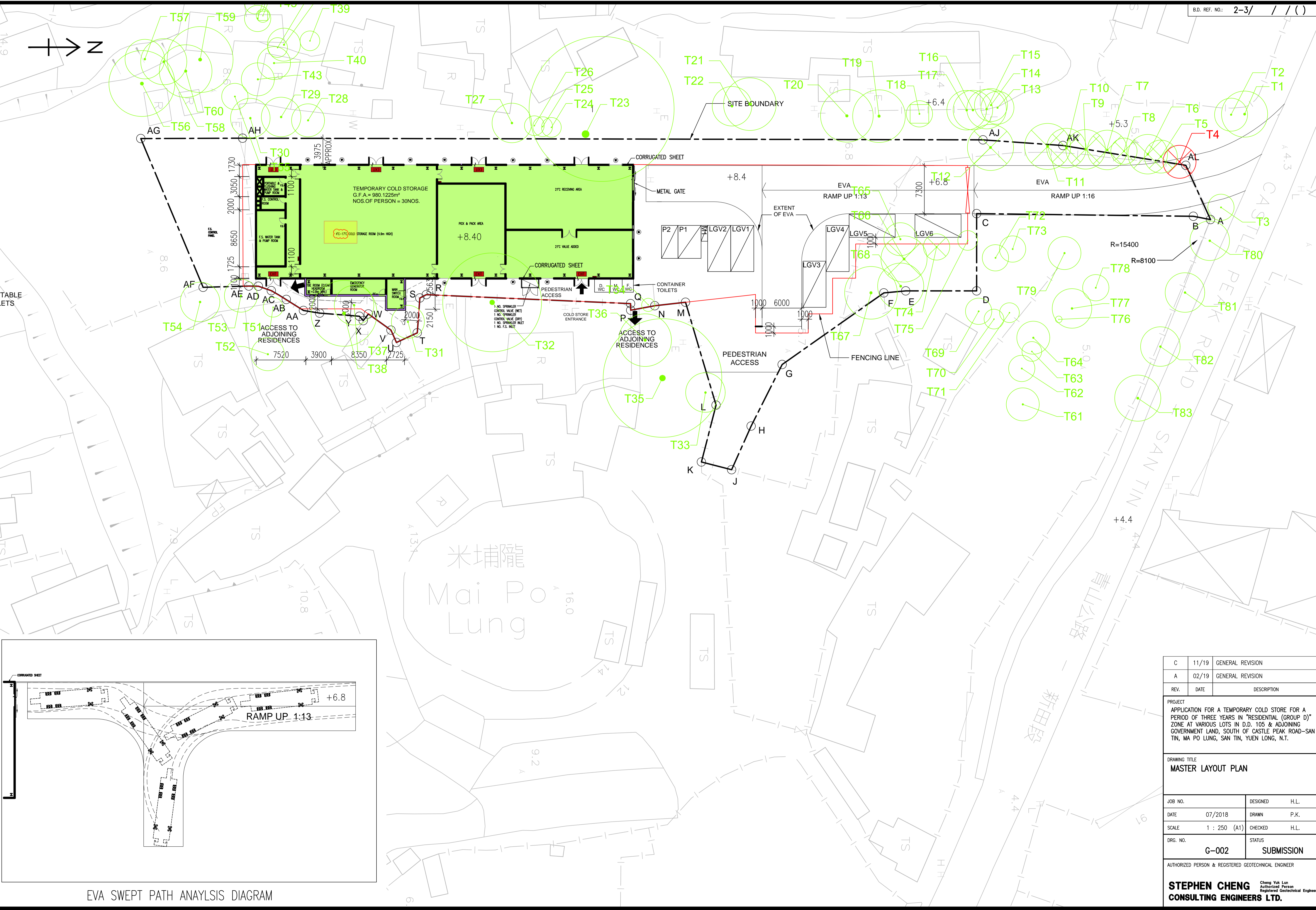
DRAWING TITLE  
**BLOCK PLAN AND NOTES**

JOB NO.	DESIGNED	H.L.
DATE	07/2018	DRAWN P.K.
SCALE	CHECKED	H.L.
AS SHOWN (A1)		
DRG. NO.	STATUS	
G-001	SUBMISSION	

AUTHORIZED PERSON & REGISTERED GEOTECHNICAL ENGINEER

**STEPHEN CHENG** Cheng Yuk Lun  
Authorized Person  
Registered Geotechnical Engineer  
**CONSULTING ENGINEERS LTD.**

CAD FILE : \\Hdfid135\Eng\Drawing\Mai\_Po\_Lung\Drawing\Structure\Latest\_Drawing\G-001C\_Notes.dwg



EVA SWEEP PATH ANALYSIS DIAGRAM

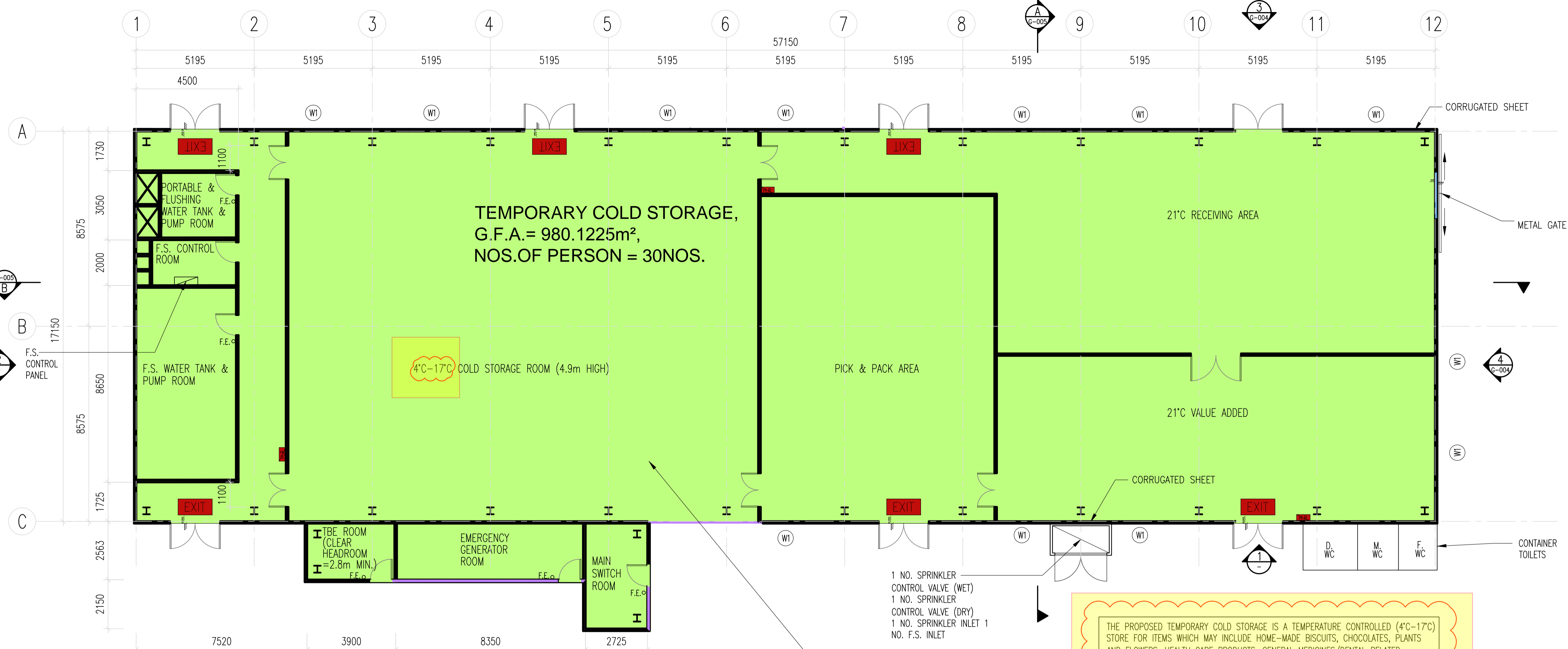
REV.	DATE	DESCRIPTION
C	11/19	GENERAL REVISION
A	02/19	GENERAL REVISION

PROJECT  
 APPLICATION FOR A TEMPORARY COLD STORE FOR A PERIOD OF THREE YEARS IN "RESIDENTIAL (GROUP D)" ZONE AT VARIOUS LOTS IN D.D. 105 & ADJOINING GOVERNMENT LAND, SOUTH OF CASTLE PEAK ROAD-SAN TIN, MA PO LUNG, SAN TIN, YUEN LONG, N.T.

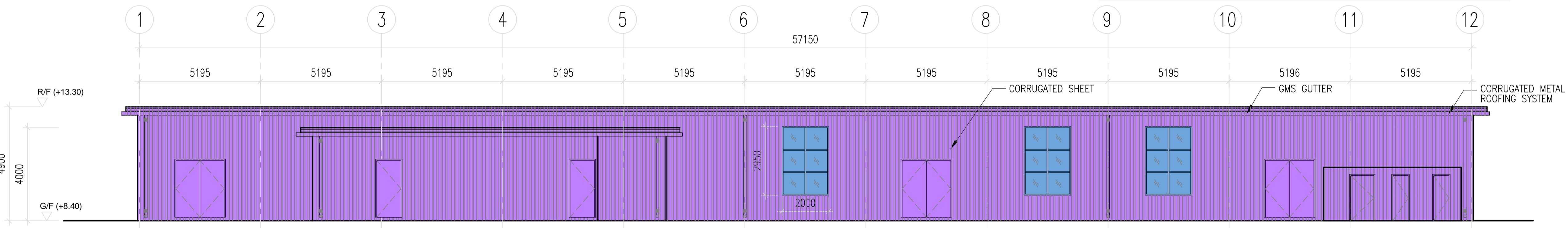
DRAWING TITLE  
**MASTER LAYOUT PLAN**

JOB NO.	DESIGNED	H.L.L.
DATE	07/2018	DRAWN P.K.
SCALE	1 : 250 (A1)	CHECKED H.L.L.
DRG. NO.	G-002	STATUS SUBMISSION

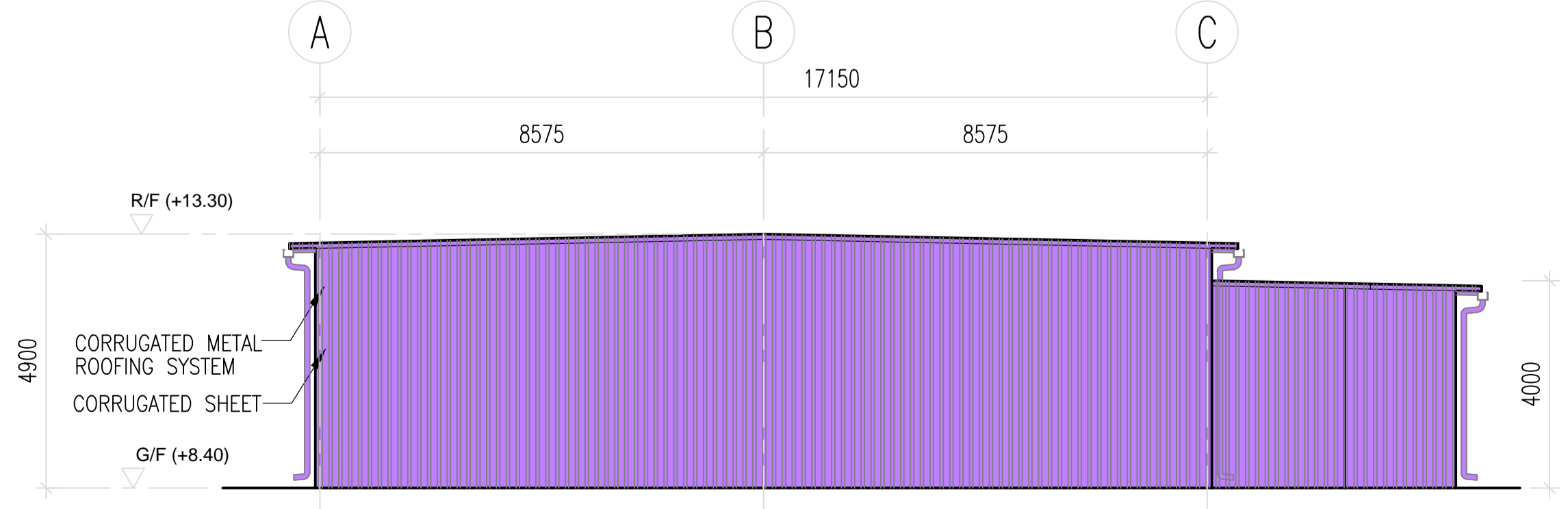
AUTHORIZED PERSON & REGISTERED GEOTECHNICAL ENGINEER  
**STEPHEN CHENG**  
 Consulting Engineers Ltd.



TEMPORARY COLD STORE LAYOUT PLAN

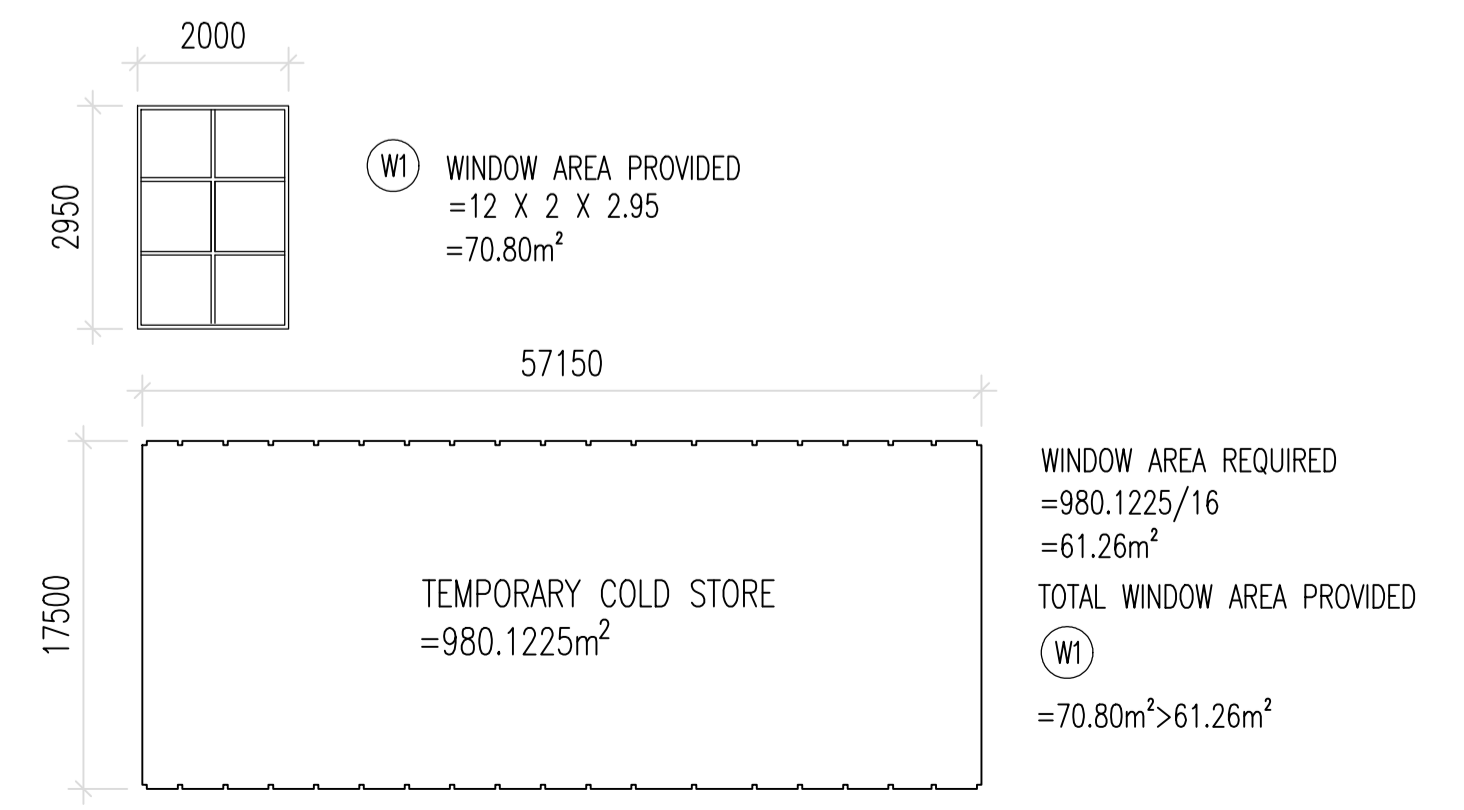


TEMPORARY COLD STORE ELEVATION 1



TEMPORARY COLD STORE ELEVATION 2

FOR F.S.D. APPROVAL



THE PROPOSED TEMPORARY COLD STORAGE IS A TEMPERATURE CONTROLLED (4°C-17°C) STORE FOR ITEMS WHICH MAY INCLUDE HOME-MADE BISCUITS, CHOCOLATES, PLANTS AND FLOWERS, HEALTH CARE PRODUCTS, GENERAL MEDICINES/DENTAL RELATED PRODUCTS, COSMETIC PRODUCTS, WINES AND SPIRITS, TOBACCO, DRIED FOOD, ETC.

LEGEND:

◦ F.E. - 4.5kg CO<sub>2</sub> FIRE EXTINGUISHER

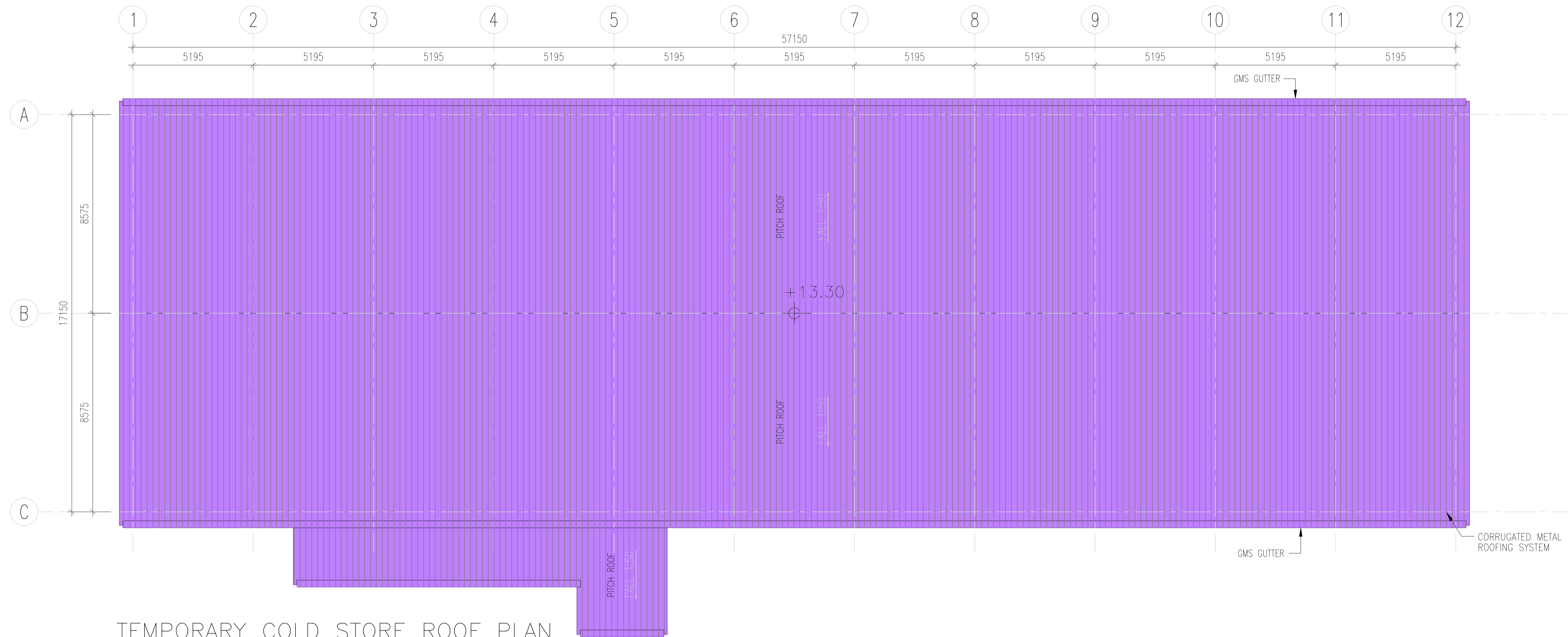
REV.	DATE	DESCRIPTION
C	11/20	GENERAL REVISION
A	02/19	GENERAL REVISION

PROJECT  
APPLICATION FOR A TEMPORARY COLD STORE FOR A PERIOD OF THREE YEARS IN "RESIDENTIAL (GROUP D)" ZONE AT VARIOUS LOTS IN D.D. 105 & ADJOINING GOVERNMENT LAND, SOUTH OF CASTLE PEAK ROAD-SAN TIN, MA PO LUNG, SAN TIN, YUEN LONG, N.T.

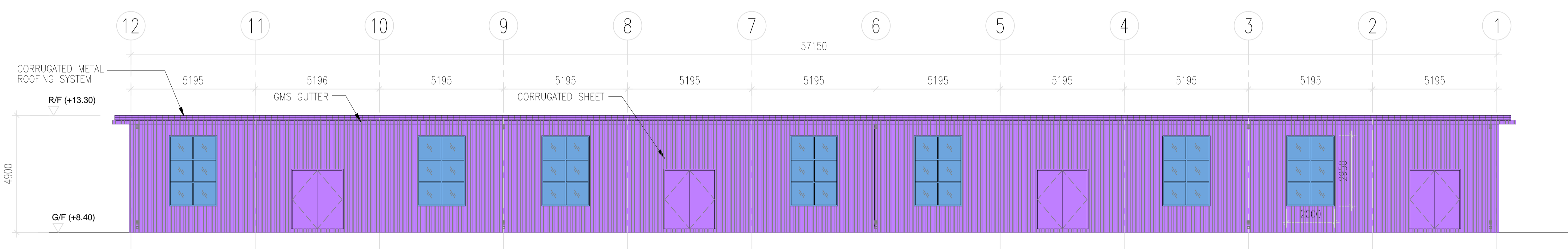
DRAWING TITLE  
**TEMPORARY COLD STORE LAYOUT PLAN AND ELEVATIONS**

JOB NO.	DESIGNED	H.L.L.
DATE	07/2018	DRAWN P.K.
SCALE	1 : 100 (A1)	CHECKED H.L.L.
DRG. NO.	G-003	STATUS SUBMISSION

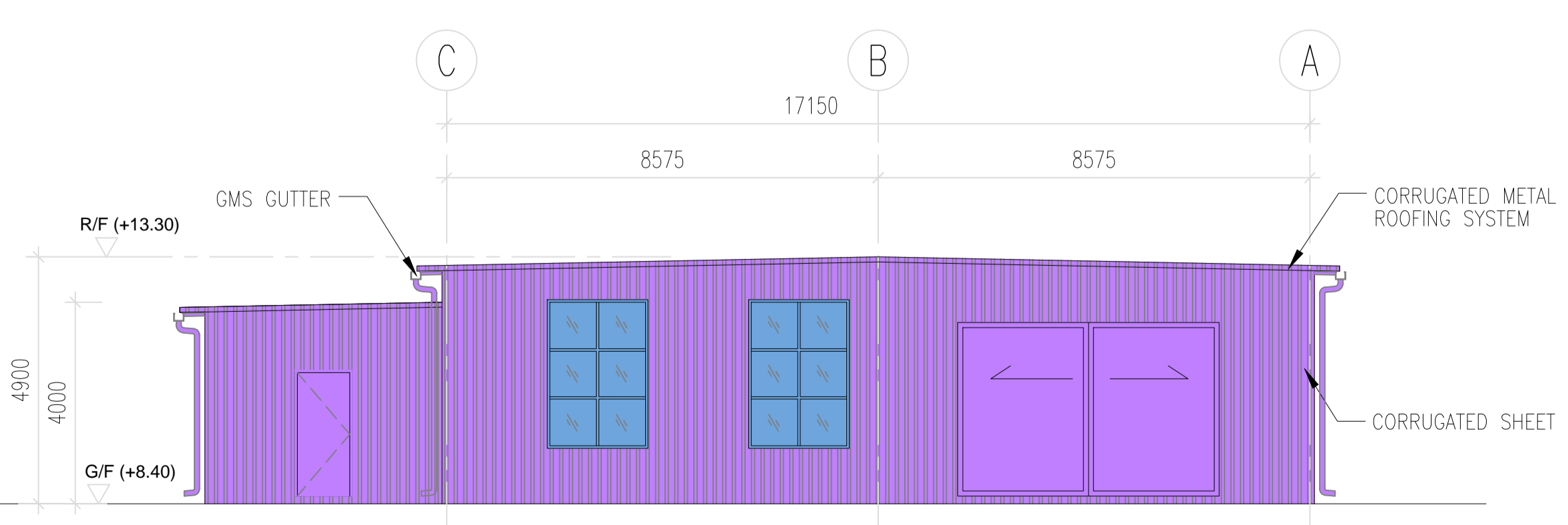
AUTHORIZED PERSON & REGISTERED GEOTECHNICAL ENGINEER  
**STEPHEN CHENG**  
Cheng Yuk Lun  
Authorized Person  
Registered Geotechnical Engineer  
**CONSULTING ENGINEERS LTD.**



TEMPORARY COLD STORE ROOF PLAN



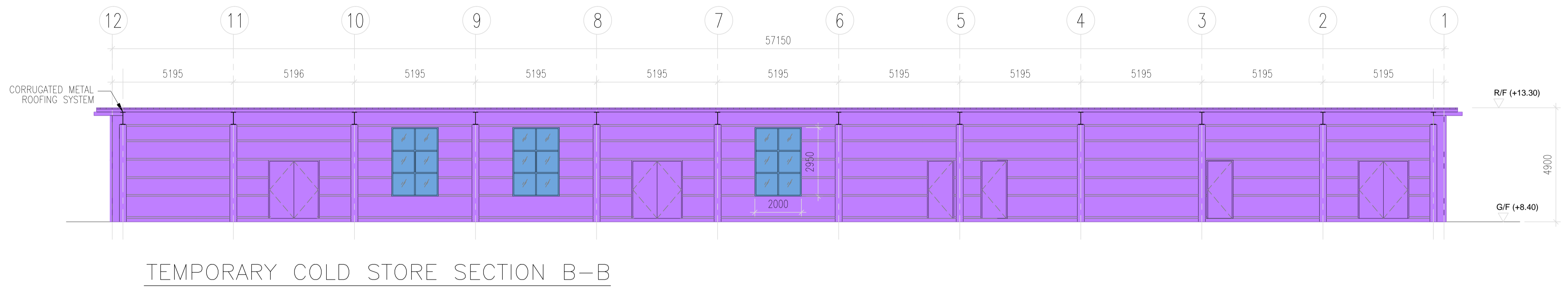
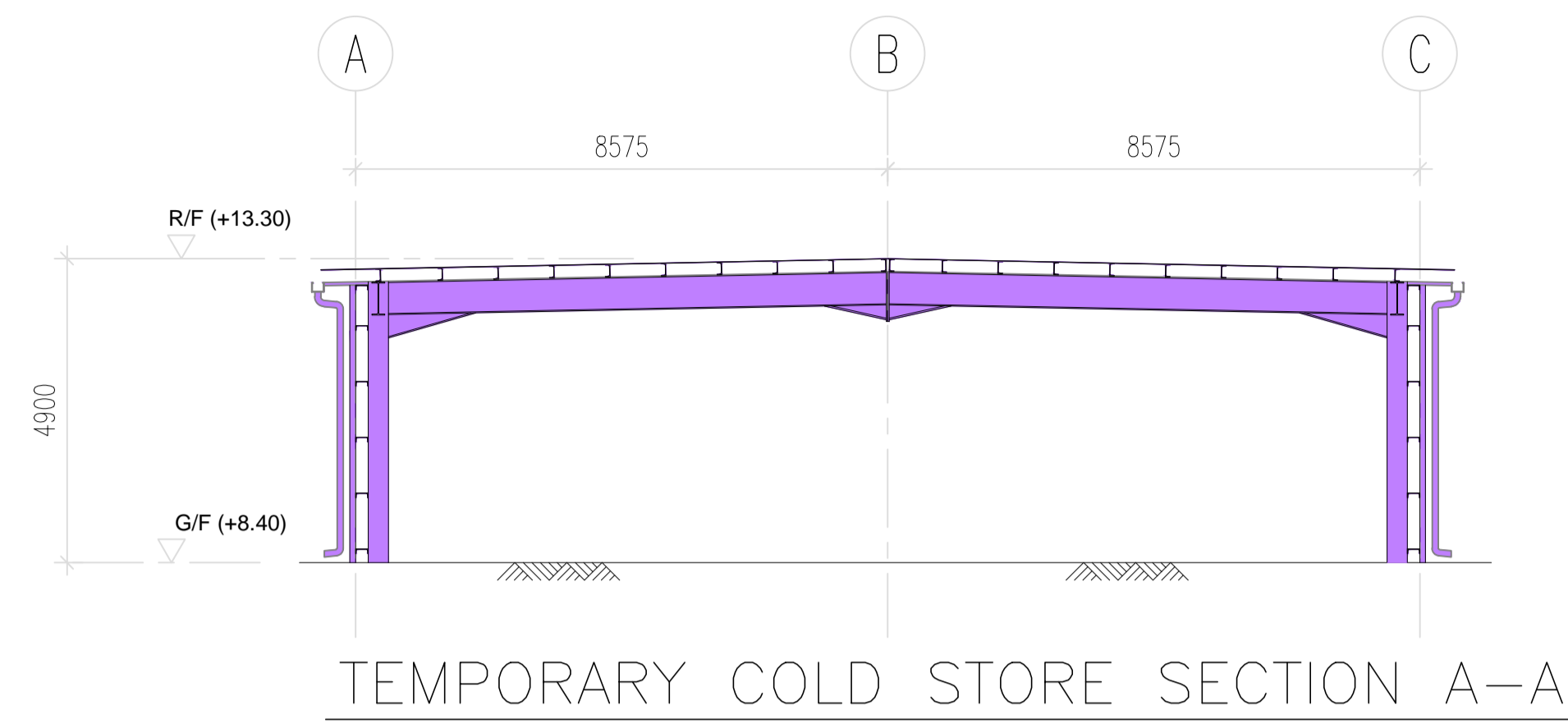
TEMPORARY COLD STORE ELEVATION 3



TEMPORARY COLD STORE ELEVATION 4

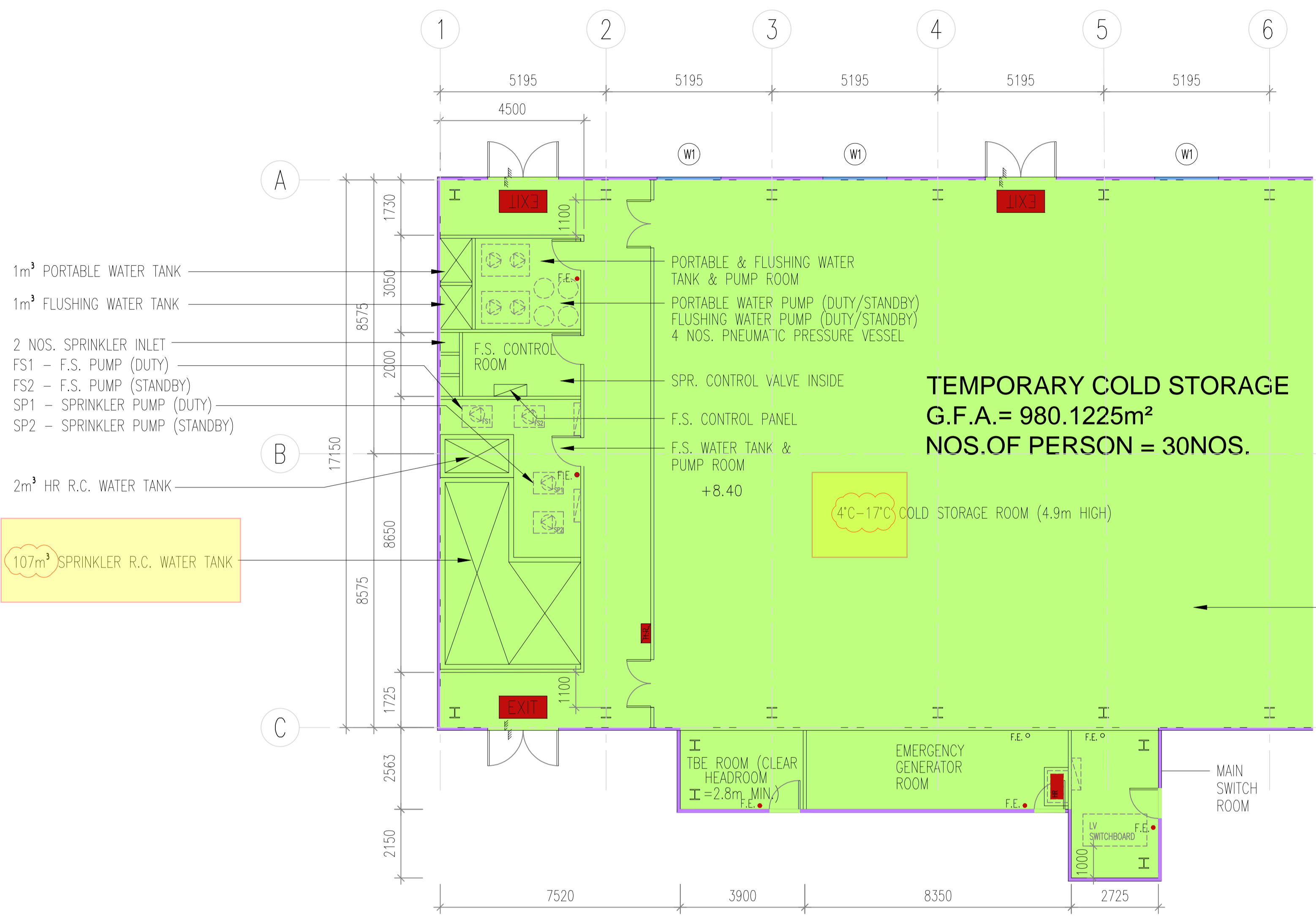
REV.	DATE	DESCRIPTION
C	11/20	RESUBMISSION WITHOUT CHANGED
PROJECT		
APPLICATION FOR A TEMPORARY COLD STORE FOR A PERIOD OF THREE YEARS IN "RESIDENTIAL (GROUP D)" ZONE AT VARIOUS LOTS IN D.D. 105 & ADJOINING GOVERNMENT LAND, SOUTH OF CASTLE PEAK ROAD-SAN TIN, MA PO LUNG, SAN TIN, YUEN LONG, N.T.		
DRAWING TITLE		
TEMPORARY COLD STORE LAYOUT PLAN AND ELEVATIONS		
JOB NO.	DESIGNED	H.L.L.
DATE	07/2018	DRAWN P.K.
SCALE	1 : 100 (A1)	CHECKED H.L.L.
DRG. NO.	G-004	STATUS SUBMISSION
AUTHORIZED PERSON & REGISTERED GEOTECHNICAL ENGINEER		
<b>STEPHEN CHENG</b>		Cheng Yuk Lun Authorized Person Registered Geotechnical Engineer
<b>CONSULTING ENGINEERS LTD.</b>		

CAD FILE : \\hifit05\EngDrawing\Mai\_Po\_Lung\Drawing\Structure\Latest\_Drawing\G-005C\_SEC.dwg

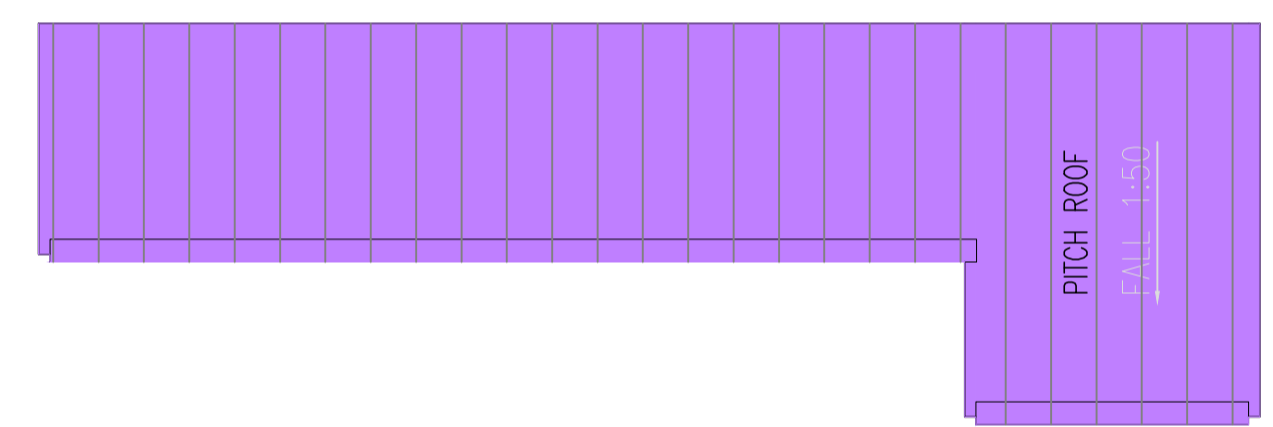


REV.	DATE	DESCRIPTION
C	11/20	RESUBMISSION WITHOUT CHANGED
PROJECT		
APPLICATION FOR A TEMPORARY COLD STORE FOR A PERIOD OF THREE YEARS IN "RESIDENTIAL (GROUP D)" ZONE AT VARIOUS LOTS IN D.D. 105 & ADJOINING GOVERNMENT LAND, SOUTH OF CASTLE PEAK ROAD-SAN TIN, MA PO LUNG, SAN TIN, YUEN LONG, N.T.		
DRAWING TITLE		
TEMPORARY COLD STORE SECTIONS		
JOB NO.	DESIGNED	H.L.L.
DATE	07/2018	DRAWN P.K.
SCALE	1 : 100 (A1)	CHECKED H.L.L.
DRG. NO.	G-005	STATUS SUBMISSION
AUTHORIZED PERSON & REGISTERED GEOTECHNICAL ENGINEER		
<b>STEPHEN CHENG</b> <small>Cheng Yuk Lun Authorized Person Registered Geotechnical Engineer</small> <b>CONSULTING ENGINEERS LTD.</b>		

CAD FILE : \\hifit35\Eng\Drawing\Wai Po Lung\Drawing\Structure\Latest\Drawing\_G-006C\_PLAN\_FOR\_E&M\_BLOCK\_TOILETS.dwg



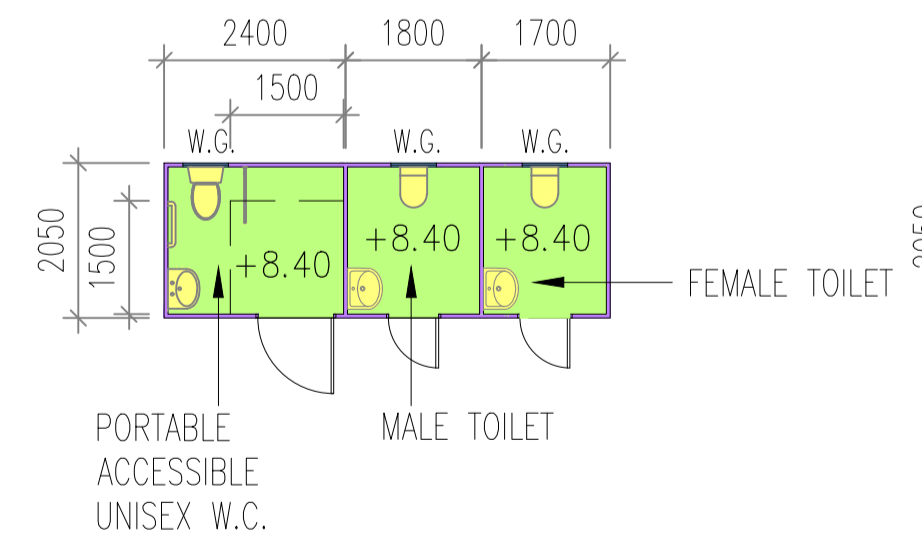
THE PROPOSED TEMPORARY COLD STORAGE IS A TEMPERATURE CONTROLLED (4°C-17°C) STORE FOR ITEMS WHICH MAY INCLUDE HOME-MADE BISCUITS, CHOCOLATES, PLANTS AND FLOWERS, HEALTH CARE PRODUCTS, GENERAL MEDICINES/DENTAL RELATED PRODUCTS, COSMETIC PRODUCTS, WINES AND SPIRITS, TOBACCO, DRIED FOOD, ETC.



PLAN 1 : 100

ROOF PLAN 1 : 100

PUMP ROOM F.S. WATER TANK, MAIN SWITCH ROOM TBE ROOM, PORTABLE WATER PUMP ROOM, EMERGENCY GENERATOR ROOM



PLAN 1 : 100

ROOF PLAN 1 : 100

NOTE:  
 1. W.G. = WIRED GLASS WINDOW  
 2. EACH CONTAINER TOILET ARE PROVIDED WITH OPENABLE WINDOW OF NOT LESS THAN 1/10 OF FLOOR AREA

CONTAINER TOILET AND POTABLE W.C.

REV.	DATE	DESCRIPTION
C	11/20	GENERAL REVISION
A	02/19	GENERAL REVISION

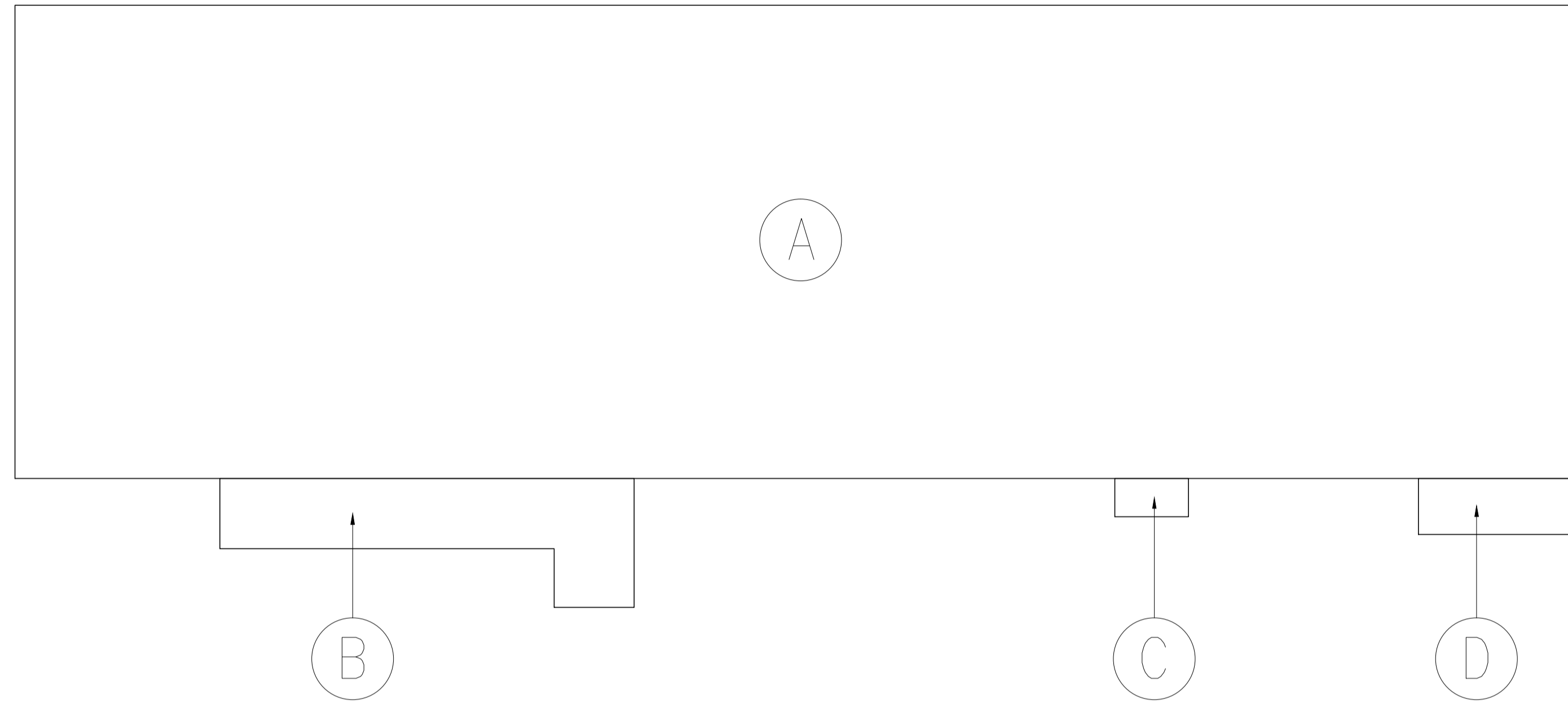
PROJECT  
 APPLICATION FOR A TEMPORARY COLD STORE FOR A PERIOD OF THREE YEARS IN "RESIDENTIAL (GROUP D)" ZONE AT VARIOUS LOTS IN D.D. 105 & ADJOINING GOVERNMENT LAND, SOUTH OF CASTLE PEAK ROAD-SAN TIN, MA PO LUNG, SAN TIN, YUEN LONG, N.T.

DRAWING TITLE  
 PLAN FOR PUMP ROOM, F.S. WATER TANK, MAIN SWITCH ROOM, TBE ROOM, PORTABLE WATER PUMP ROOM, EMERGENCY GENERATOR ROOM AND TOILET

JOB NO.	DESIGNED	H.L.L.
DATE	07/2018	DRAWN P.K.
SCALE	N.T.S. (A1)	CHECKED H.L.L.
DRG. NO.	G-006	STATUS SUBMISSION

AUTHORIZED PERSON & REGISTERED GEOTECHNICAL ENGINEER

**STEPHEN CHENG** Cheng Yuk Lun Authorized Person Registered Geotechnical Engineer  
 CONSULTING ENGINEERS LTD.



G/F G.F.A. DIAGRAM AND CALCULATION :

G.F.A. OF G/F WORKSHOOP :

COVERAGE OF G/F WORKSHOP :

- Ⓐ = 980.1225 m<sup>2</sup>
- Ⓑ = 44.2397 m<sup>2</sup>
- Ⓒ = 3.78 m<sup>2</sup>
- Ⓓ = 12.095 m<sup>2</sup>

- Ⓐ = 980.1225 m<sup>2</sup>
- Ⓑ = 44.2397 m<sup>2</sup>
- Ⓒ = 3.78 m<sup>2</sup>
- Ⓓ = 12.095 m<sup>2</sup>

TOTAL = 1040.237 m<sup>2</sup>

TOTAL = 1040.237 m<sup>2</sup>

PLOT RATIO AND SITE COVERAGE CALCULATION :

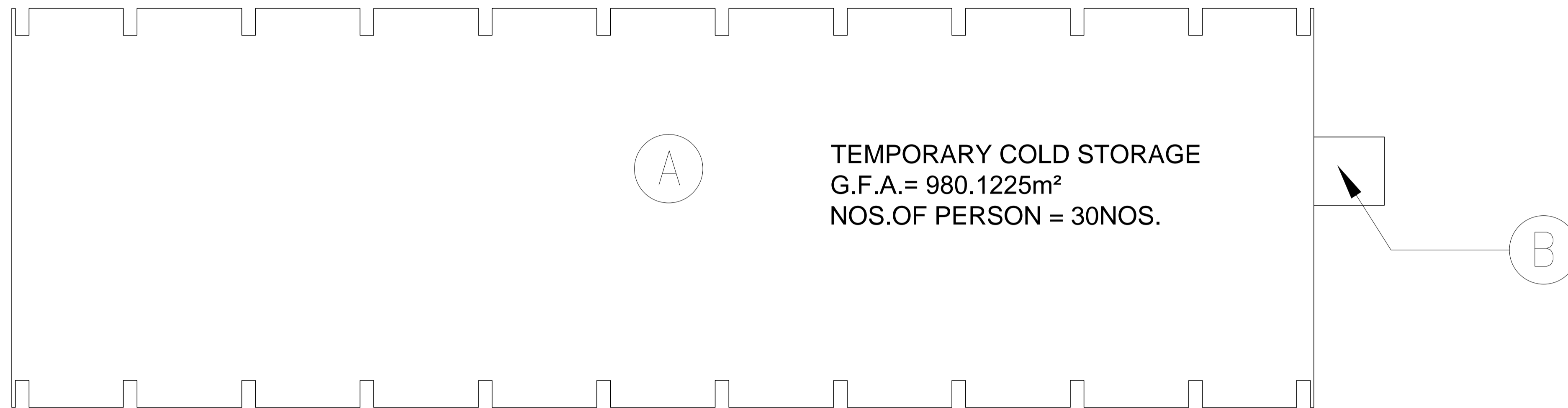
- SITE AREA : 3,633.222 m<sup>2</sup>
- CLASS OF SITE : A
- BUILDING HEIGHT : = 4.9 m
- PERMITTED SITE COVERAGE : = 65%
- PROPOSED SITE COVERAGE : = 1040.237 / 3633.222 = 28.60% < 65%
- PERMITTED PLOT RATIO : = 1
- PROPOSED PLOT RATIO : = 1040.237 / 3633.222 = 28.60% < 1

PARKING REQUIREMENT CALCULATION :

- PRIVATE CARPARK REQUIRED : = 2 nos. [5m(L) x 2.5(W)]
- PRIVATE CARPARK PROVIDED : = 2 nos. [7m(L) x 3.5(W)]
- LIGHT GOODS VEHICLE CARPARK REQUIRED : = 6 nos. [7m(L) x 3.5(W)]
- LIGHT GOODS VEHICLE CARPARK PROVIDED : = 6 nos. [7m(L) x 3.5(W)]

REV.	DATE	DESCRIPTION
C	11/20	RESUBMISSION WITHOUT CHANGED
PROJECT		
APPLICATION FOR A TEMPORARY COLD STORE FOR A PERIOD OF THREE YEARS IN "RESIDENTIAL (GROUP D)" ZONE AT VARIOUS LOTS IN D.D. 105 & ADJOINING GOVERNMENT LAND, SOUTH OF CASTLE PEAK ROAD-SAN TIN, MA PO LUNG, SAN TIN, YUEN LONG, N.T.		
DRAWING TITLE		
PLOT RATIO, SITE COVERAGE & G.F.A. CALCULATION		
JOB NO.	DESIGNED	H.L.L.
DATE	07/2018	DRAWN P.K.
SCALE	N.T.S. (A1)	CHECKED H.L.L.
DRG. NO.	G-007	STATUS SUBMISSION
AUTHORIZED PERSON & REGISTERED GEOTECHNICAL ENGINEER		
<b>STEPHEN CHENG</b> Authorized Person Registered Geotechnical Engineer <b>CONSULTING ENGINEERS LTD.</b>		

CAD FILE : \\hid135\Eng\Drawing\Mai Po Lung\Drawing\Structure\Latest\Drawing\G-008C\_U.F.A. CALCULATION AND SCHEDULE.dwg

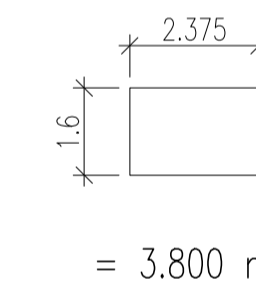


TOTAL AGGREGATE USABLE FLOOR AREA OF G/F

= 980.1225 m<sup>2</sup>

AREA OF REFUSE STORAGE & MATERIAL RECOVERY CHAMBER REQUIRED :

980.1225 m<sup>2</sup> / 2,320  
= 0.423 m<sup>2</sup>

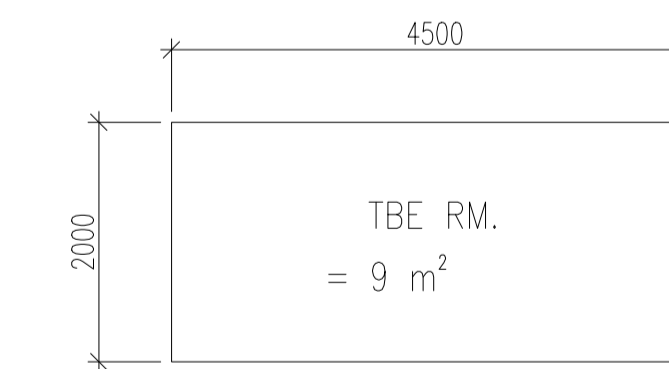


= 3.800 m<sup>2</sup>

AREA OF REFUSE STORAGE & MATERIAL RECOVERY CHAMBER PROVIDED :

= 3.800 m<sup>2</sup> > 0.423 m<sup>2</sup>

REFUSE STORAGE & MATERIAL RECOVERY CHAMBER DIAGRAM



AREA OF TBE ROOM REQUIRED :

TOTAL U.F.A.= 980.1255 m<sup>2</sup> < 2000m<sup>2</sup>  
MIN. AREA OF TBE ROOM IS : < 10 m<sup>2</sup>  
PROVIDED : = 9 m<sup>2</sup>

G/F U.F.A. DIAGRAM AND CALCULATION :

U.F.A. OF G/F WORKSHOP :

Ⓐ WORKSHOP = 980.1225 m<sup>2</sup>

TOTAL = 980.1225 m<sup>2</sup>

FIRE RESISTANCE REQUIREMENT FOR ELEMENTS OF CONSTRUCTION :									
STOREY	TYPE OF ACCOMMODATION	USE CLASSIFICATION	COMPARTMENT OF BUILDING (EACH FLOOR)	F.R.R. (MIN.)	MINIMUM DIMENSION FOR ELEMENT OF CONSTRUCTION (mm)				
					ON-GRADE SLAB THICK	STEEL BEAM COVER TO STEEL	STEEL COLUMN SOLID PROTECTION	STEEL COLUMN SOLID PROTECTION	BRICKWORKS THICK
G/F	WAREHOUSE	6	1040.237 m <sup>2</sup>	60	125	35	50	50	100
	REFUSE STORAGE AND MATERIAL RECOVER CHAMBER/ PUMP ROOM, E/M ROOM	8	-	60	125	35	50	50	100

\* MASS PER METER NOT LESS THAN 45 kg

PROVISIONS OF EXIT DOOR / EXIT ROUTE FROM ROOM OR STOREY :														
FLOOR	TYPE OF ACCOMMODATION	USABLE FL. AREA (m <sup>2</sup> )	OCCUPANCY FACTOR	TOTAL NO. OF PERSON	MIN. NO. OF EXIT ROUTE & EXIT DOOR		MINIMUM WIDTH OF EACH (mm)				MINIMUM TOTAL WIDTH (mm)			
					REQUIRED	PROVIDED	EXIT DOOR		EXIT ROUTE		EXIT DOOR		EXIT ROUTE	
							REQUIRED	PROVIDED	REQUIRED	PROVIDED	REQUIRED	PROVIDED	REQUIRED	PROVIDED
G/F	WORKSHOP	980.1225	SAY	30	2	2	850	1,200	1,050	1,500	1,750	2,400	2,100	3,000

SCHEDULE OF SANITARY FITMENTS :															
LOCATION	INTENDED USE	USABLE FLOOR (m <sup>2</sup> )	OCCUPANCY FACTOR	TOTAL NO. OF PERSON	MIN. OF REQUIRED				NO. PROVIDED				ACCESSIBLE UNISEX LAV.		
					M.	F.	BATH/SHOWER	URINAL	W.C.	BASIN	BATH/SHOWER	URINAL			
G/F	WORKSHOP	980.1225	SAY	25	M.	13	1	1	-	1	1	1	-	3	1
					F.	12	1	1	-	-	1	1	-	-	

REV.	DATE	DESCRIPTION
C	11/20	RESUBMISSION WITHOUT CHANGED

PROJECT  
APPLICATION FOR A TEMPORARY COLD STORE FOR A PERIOD OF THREE YEARS IN "RESIDENTIAL (GROUP D)" ZONE AT VARIOUS LOTS IN D.D. 105 & ADJOINING GOVERNMENT LAND, SOUTH OF CASTLE PEAK ROAD-SAN TIN, MA PO LUNG, SAN TIN, YUEN LONG, N.T.

DRAWING TITLE  
U.F.A. CALCULATION AND SCHEDULE

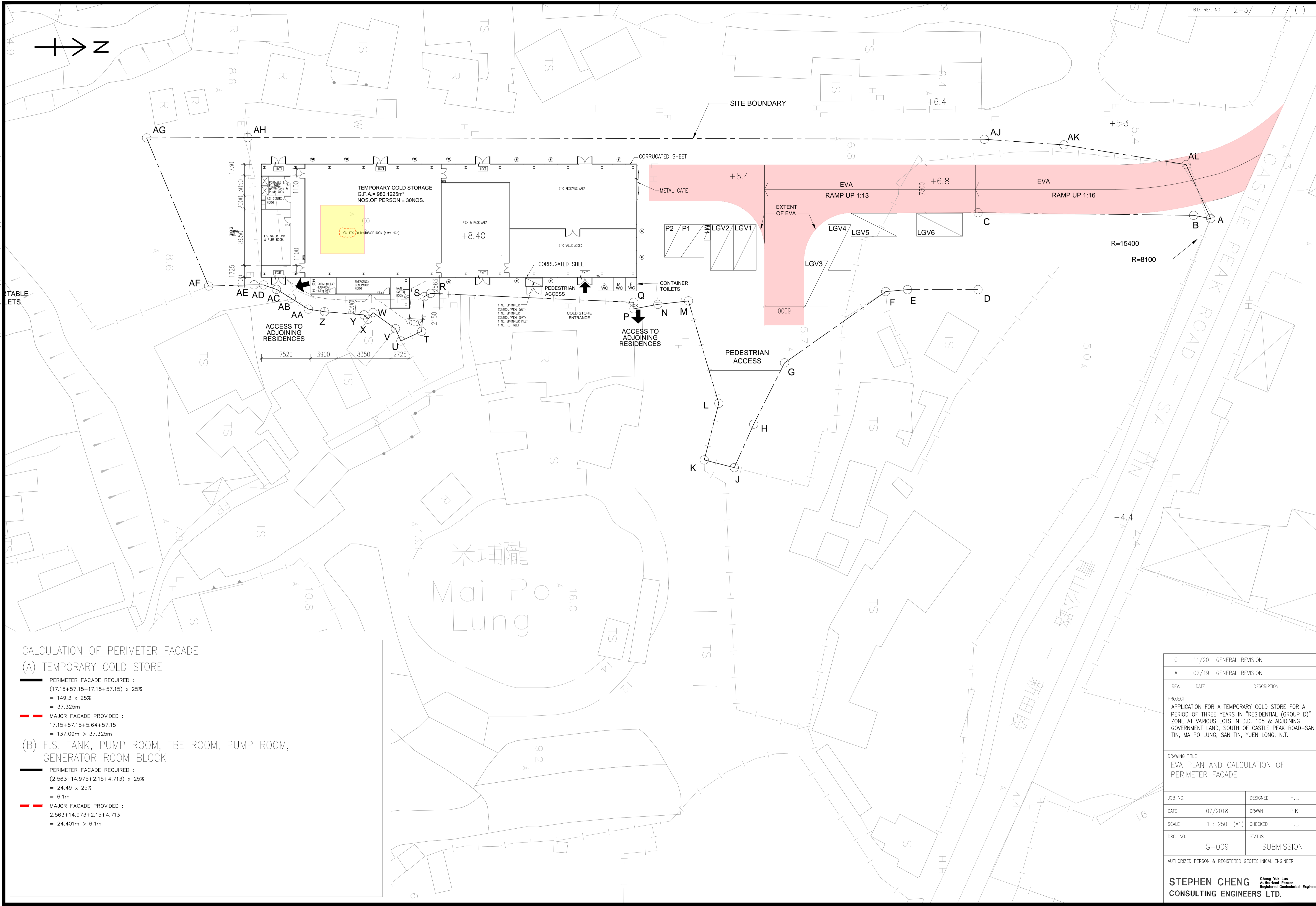
JOB NO.	DESIGNED	H.L.
DATE	07/2018	DRAWN P.K.
SCALE	1 : 250 (A1)	CHECKED H.L.
DRG. NO.	G-008	STATUS SUBMISSION

AUTHORIZED PERSON & REGISTERED GEOTECHNICAL ENGINEER

**STEPHEN CHENG**  
Authorized Person  
Registered Geotechnical Engineer  
**CONSULTING ENGINEERS LTD.**



CAD FILE : \\hifit35\Engineering\Mai Po Lung\Drawing\Structure\Latest\Drawing\G-009C-EVA plan and Calculation of Perimeter Facade.dwg



**CALCULATION OF PERIMETER FACADE**

**(A) TEMPORARY COLD STORE**

PERIMETER FACADE REQUIRED :  
 $(17.15+57.15+17.15+57.15) \times 25\%$   
 = 149.3 x 25%  
 = 37.325m

MAJOR FACADE PROVIDED :  
 $17.15+57.15+5.64+57.15$   
 = 137.09m > 37.325m

**(B) F.S. TANK, PUMP ROOM, TBE ROOM, PUMP ROOM, GENERATOR ROOM BLOCK**

PERIMETER FACADE REQUIRED :  
 $(2.563+14.975+2.15+4.713) \times 25\%$   
 = 24.49 x 25%  
 = 6.1m

MAJOR FACADE PROVIDED :  
 $2.563+14.973+2.15+4.713$   
 = 24.401m > 6.1m

REV.	DATE	DESCRIPTION
C	11/20	GENERAL REVISION
A	02/19	GENERAL REVISION

PROJECT  
 APPLICATION FOR A TEMPORARY COLD STORE FOR A PERIOD OF THREE YEARS IN "RESIDENTIAL (GROUP D)" ZONE AT VARIOUS LOTS IN D.D. 105 & ADJOINING GOVERNMENT LAND, SOUTH OF CASTLE PEAK ROAD-SAN TIN, MA PO LUNG, SAN TIN, YUEN LONG, N.T.

DRAWING TITLE  
 EVA PLAN AND CALCULATION OF PERIMETER FACADE

JOB NO.	DESIGNED	H.L.L.
DATE	07/2018	DRAWN P.K.
SCALE	1 : 250 (A1)	CHECKED H.L.L.
DRG. NO.	G-009	STATUS SUBMISSION

AUTHORIZED PERSON & REGISTERED GEOTECHNICAL ENGINEER  
**STEPHEN CHENG** Cheng Yuk Lun  
 Authorized Person Registered Geotechnical Engineer  
**CONSULTING ENGINEERS LTD.**